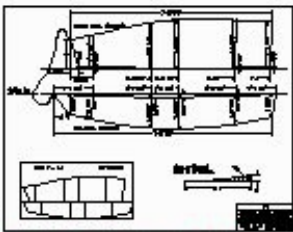
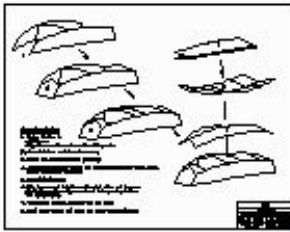
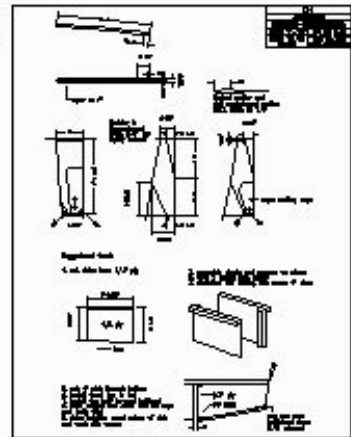
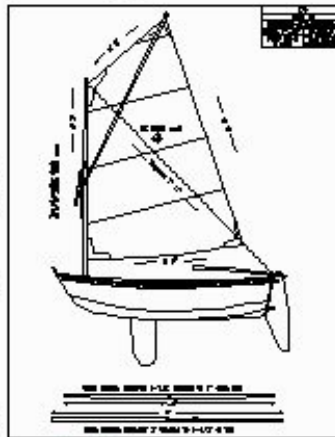
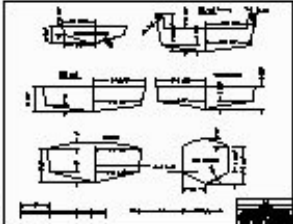
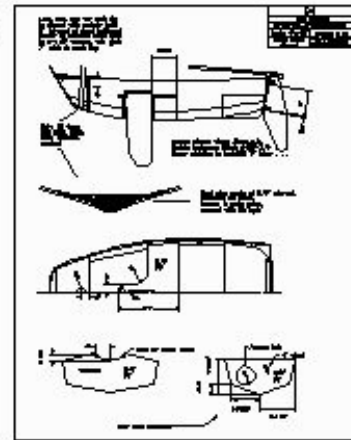
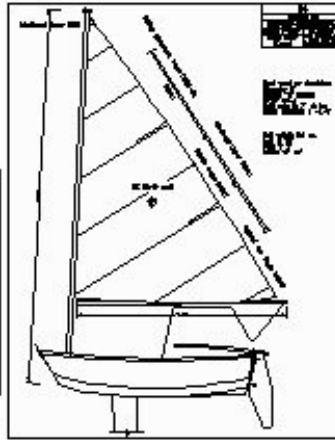
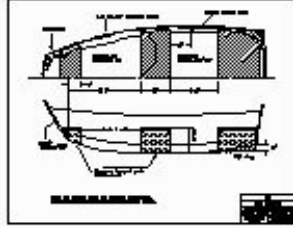
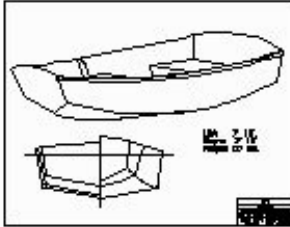


# D4 Dinghy

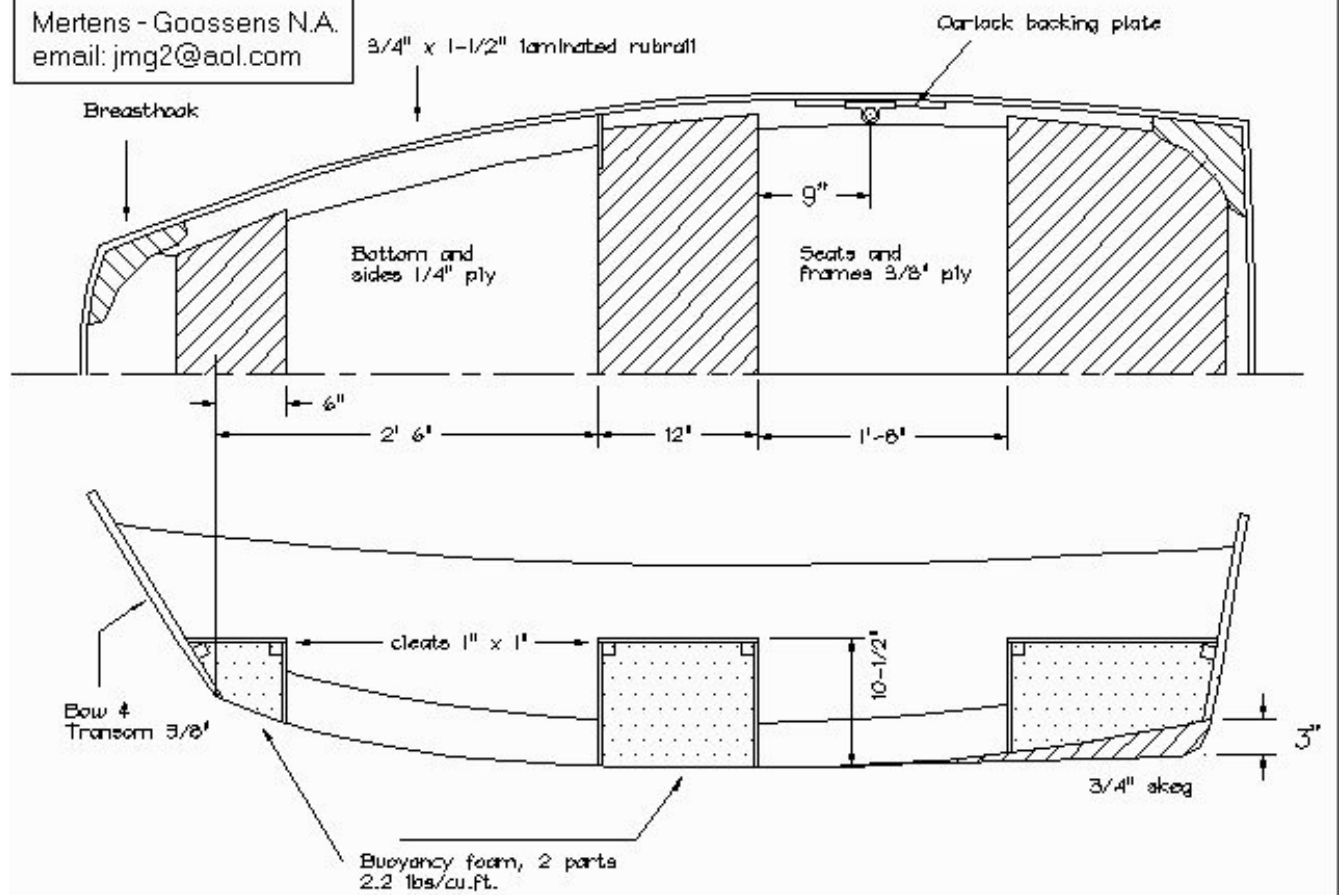
Mertens - Goossens N.A.  
email: jmg2@aol.com



All sheets included in large scale plans...

# D4 Dinghy

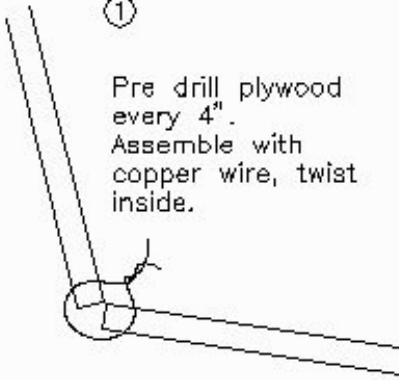
Mertens - Goossens N.A.  
email: jmg2@aol.com



## Stitch and Glue procedure.

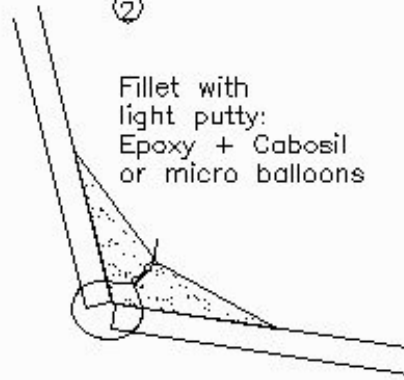
①

Pre drill plywood every 4".  
Assemble with copper wire, twist inside.



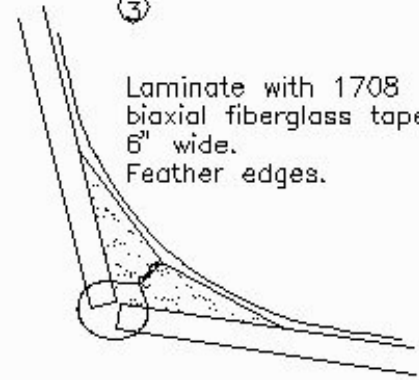
②

Fillet with light putty:  
Epoxy + Cabosil  
or micro balloons



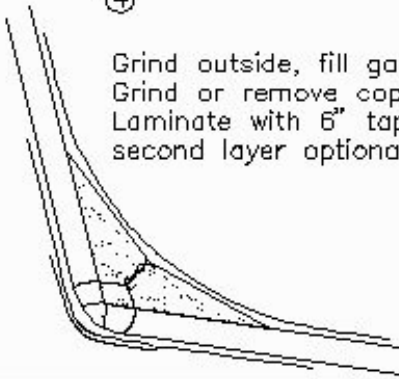
③

Laminate with 1708  
biaxial fiberglass tape  
6" wide.  
Feather edges.



④

Grind outside, fill gap with putty.  
Grind or remove copper wire,  
Laminate with 6" tape,  
second layer optional.



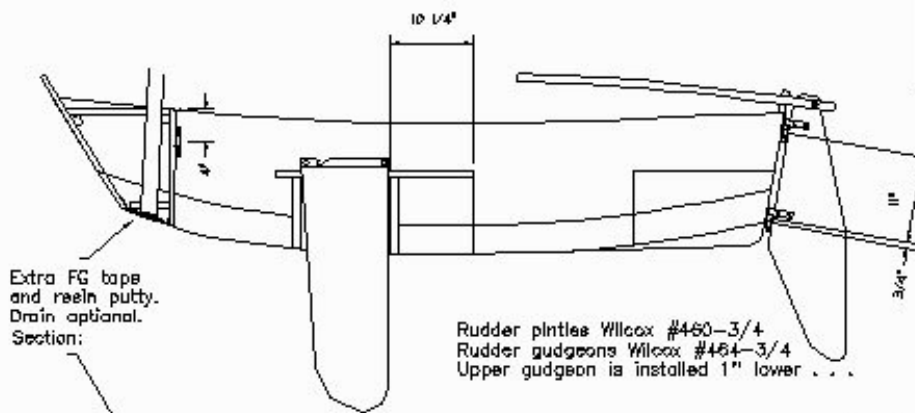
### Lamination schedule:

Chine, bow, transom inside:  
biaxial 1708, 6" wide, one layer  
Keel, in and outside:  
Biaxial 1708, 6" wide, one layer  
Outside all, seats and frames:  
9 oz. tape, 6" wide

**Sail Options**

***D4 Dinghy***

Mertens - Goossens N.A.  
email: jmg2@aol.com



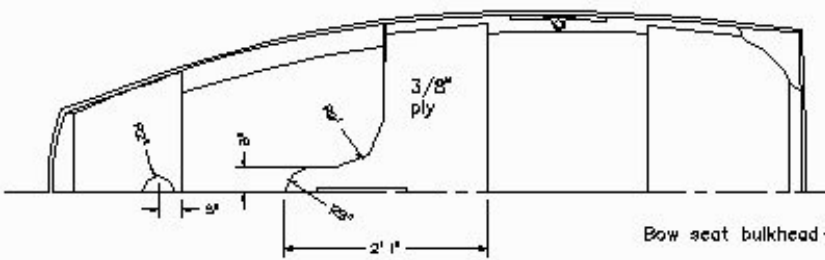
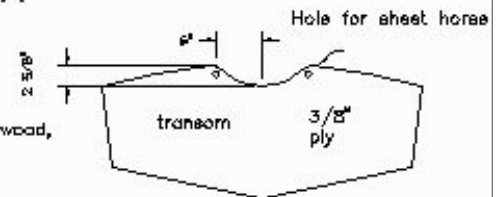
Extra FG tape and resin putty. Drain optional. Section:

Rudder pintles Wilcox #460-3/4  
Rudder gudgeons Wilcox #464-3/4  
Upper gudgeon is installed 1" lower . . .

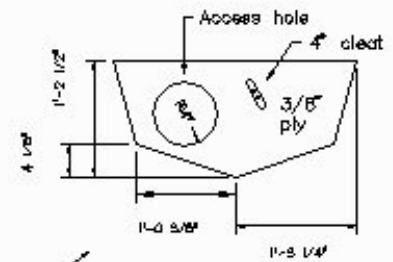
Mast step hole for sprit rig is aligned with partner hole, 3" forward of mast bulkhead. Center of marconi mast step is 3-1/2" forward, this gives 7° rake at mast top.

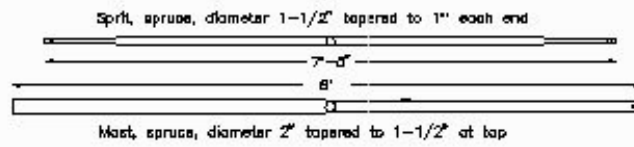
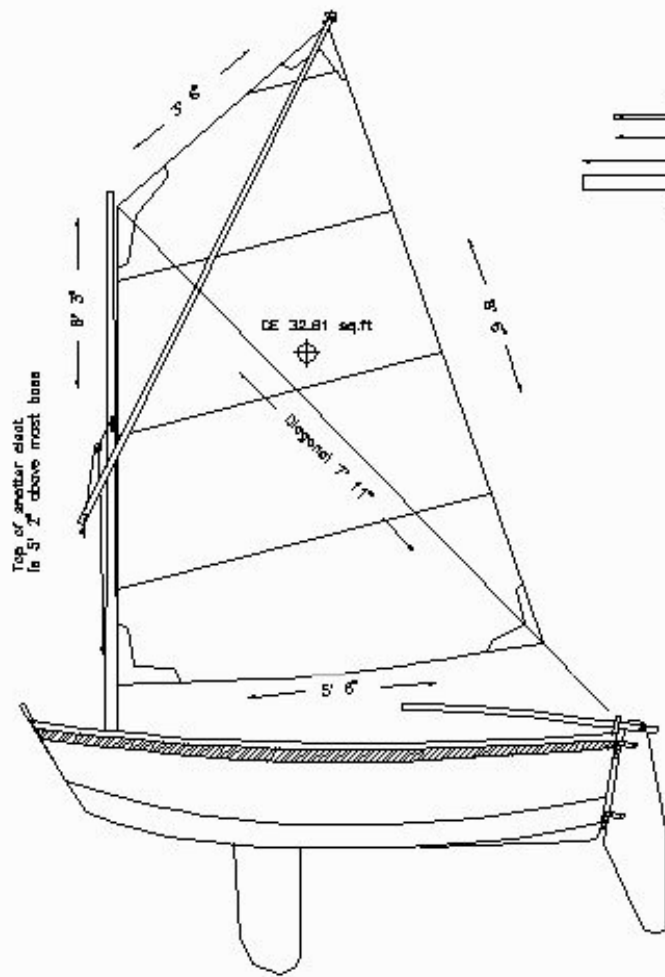


Mast step made of 3/4" plywood, predrilled for mast, bedded in resin putty, covered with FG tape.



Bow seat bulkhead

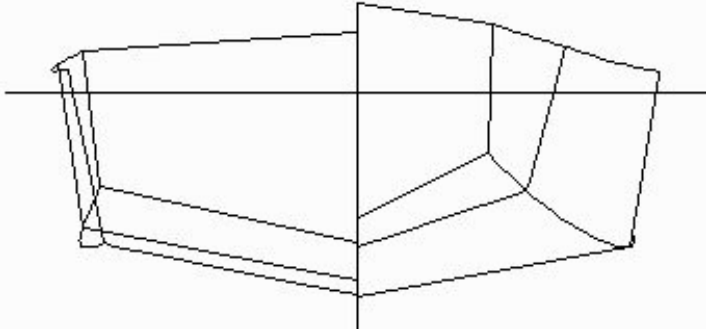
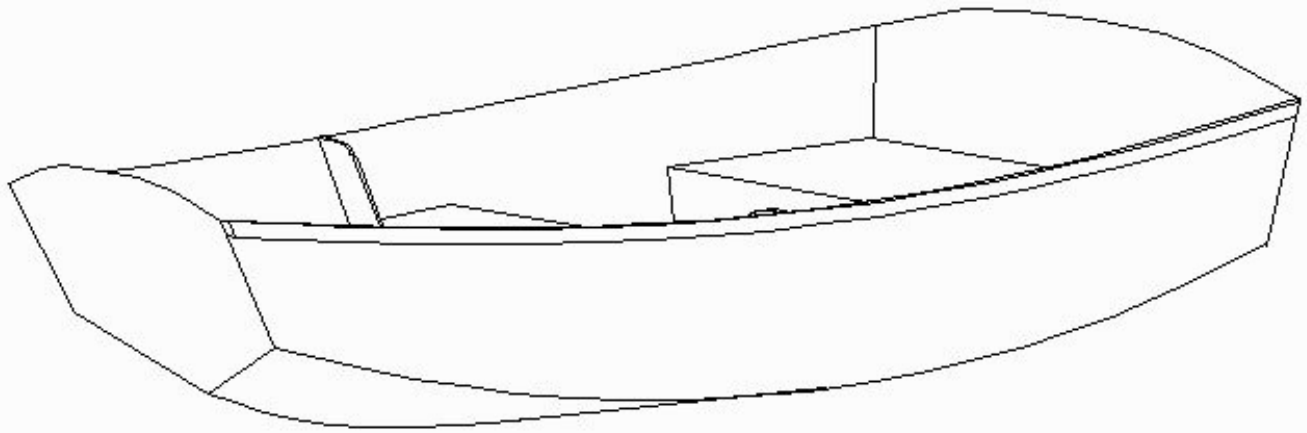




## *D4 Dinghy*

Mertens - Goossens N.A.  
email: jmg2@aol.com

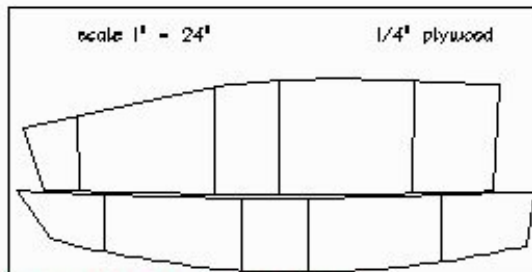
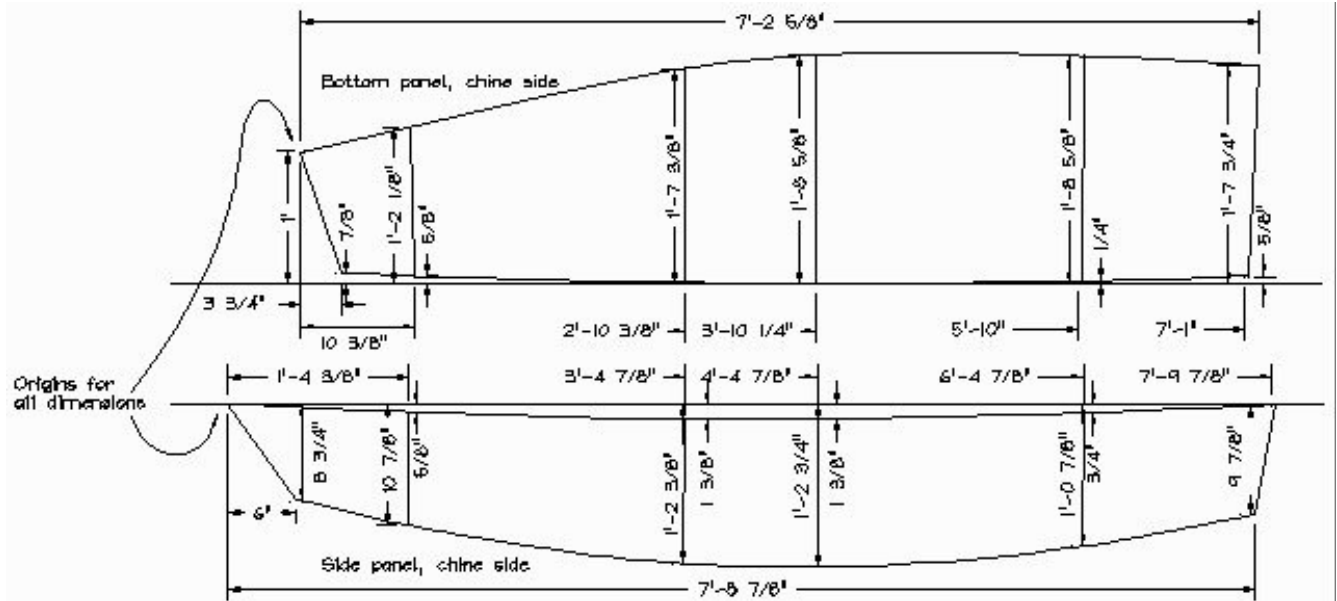
**Sprit Rig**



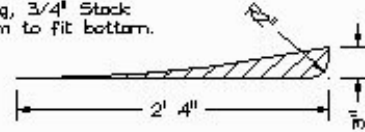
LOA: 7' 10"  
Beam: 3' 10"  
Weight: 55 lbs.

***D4 Dinghy***

Mertens - Goossens N.A.  
email: [jmg2@aol.com](mailto:jmg2@aol.com)



Skag, 3/4" Stack  
Trim to fit bottom.



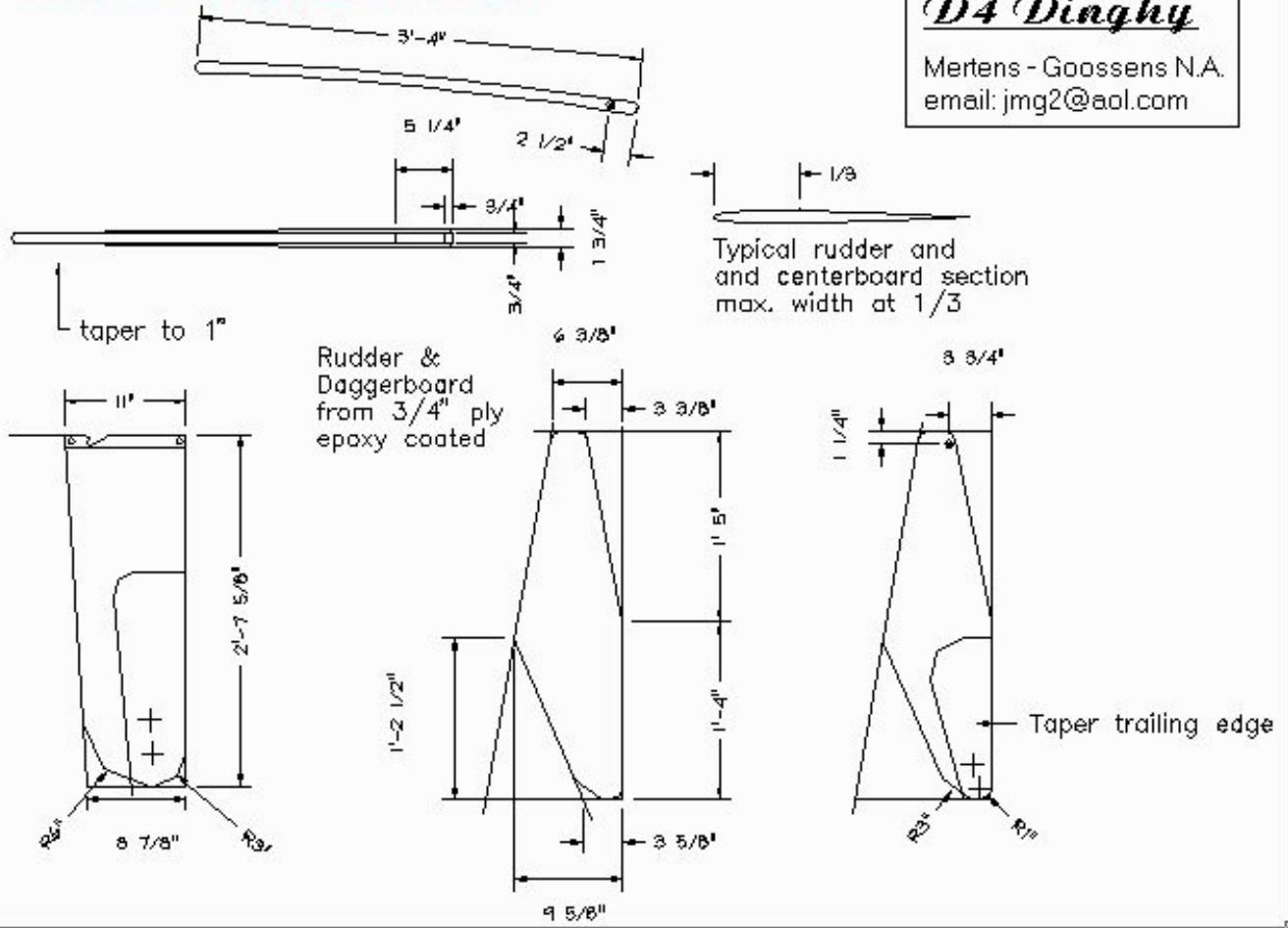
## D4 Dinghy

Mertens - Goossens N.A.  
email: jmg2@aol.com

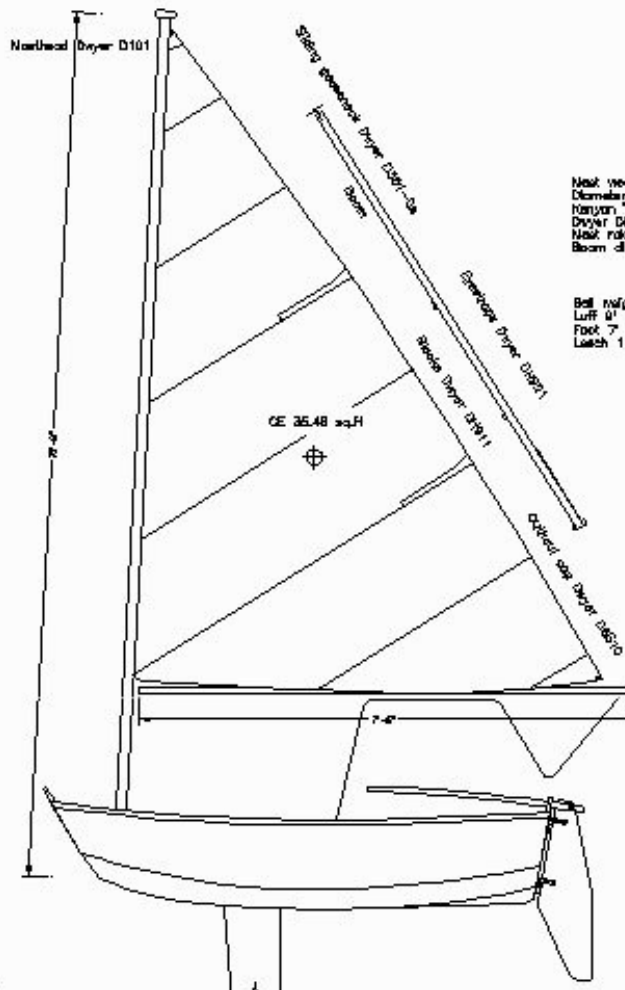
Expanded plates and nesting

# Rudder, tiller and daggerboard construction

***D4 Dinghy***  
Mertens - Goossens N.A.  
email: jmg2@aol.com







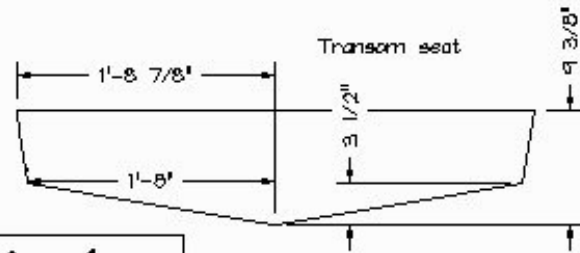
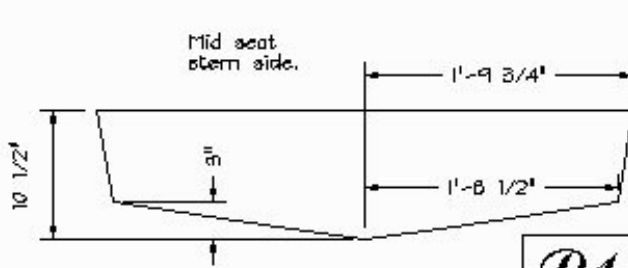
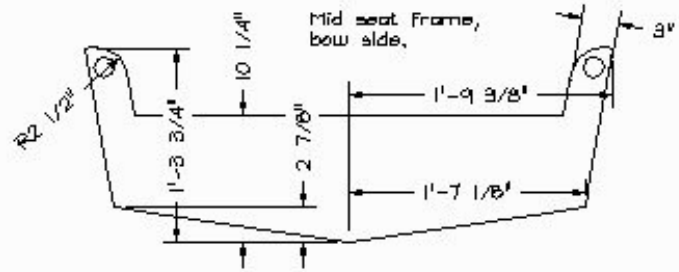
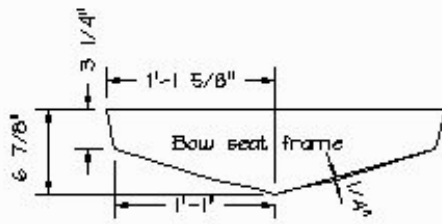
Mast: wood or aluminum  
 Diameter: 2"  
 Material: 1/2" section  
 D101-1  
 Mast rake is 7° at top  
 Boom diameter: 1 - 1/4"

Ball weight: 2.2 oz.  
 Luff: 6' 10"  
 Foot: 7' 7"  
 Latch: 11' 10"

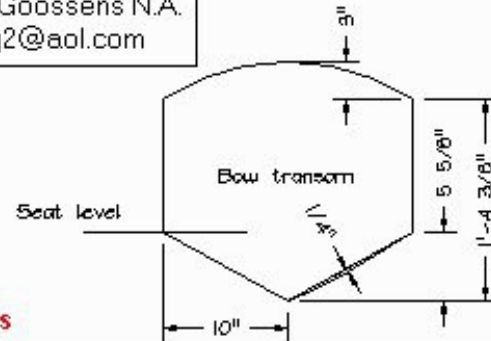
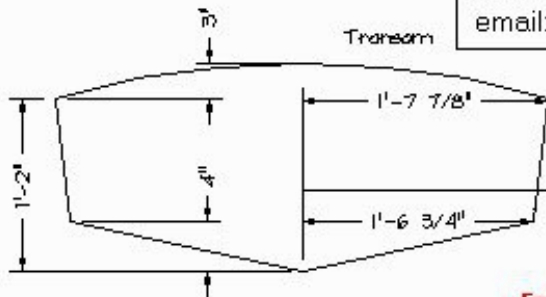
***D4 Dinghy***

Mertens - Goossens N.A.  
 email: [jmg2@aol.com](mailto:jmg2@aol.com)

**Marconi rig**



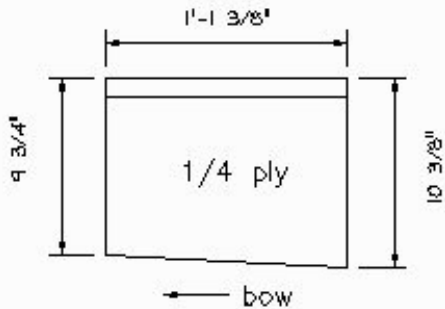
***D4 Dinghy***  
 Mertens - Goossens N.A.  
 email: jmg2@aol.com



**Frames**

Daggerboard trunk:

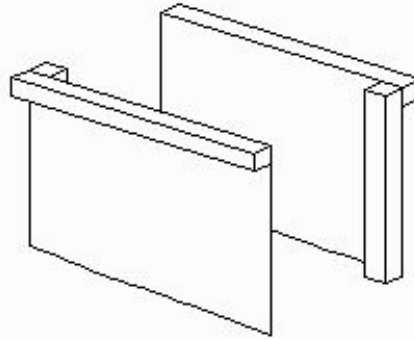
1. cut sides from 1/4" ply



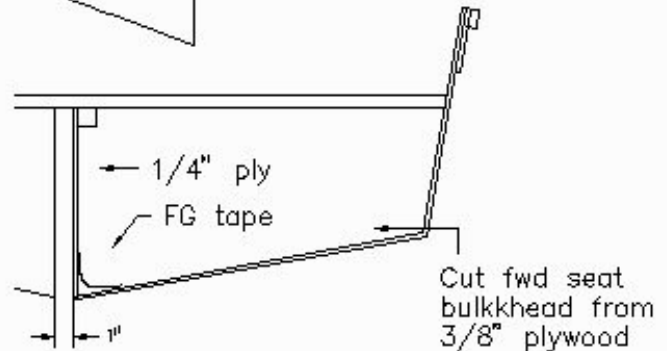
## *D4 Dinghy*

Mertens - Goossens N.A.  
email: jmg2@aol.com

2. assemble cleats and spacers as shown
3. coat 2 halves with epoxy
4. assemble two halves, use cleats 1" wide

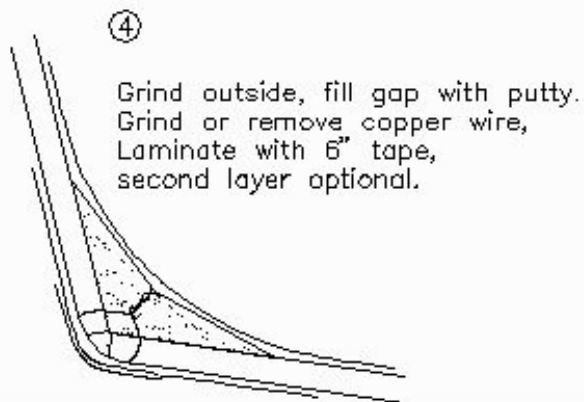
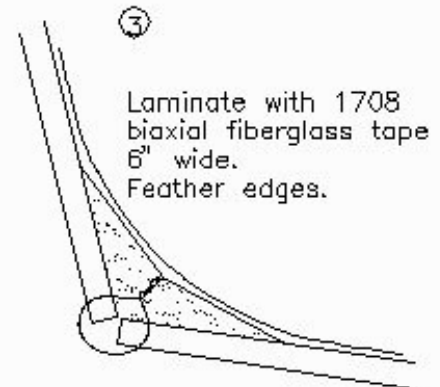
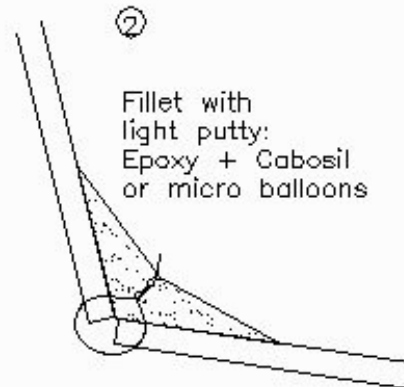
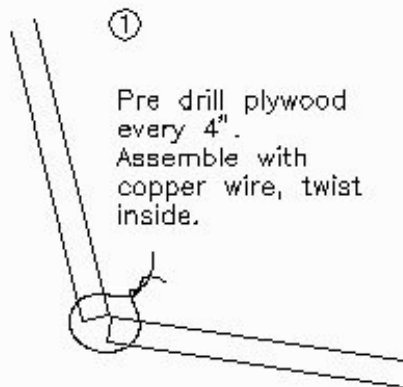


5. cut 1" slot through bottom
6. install trunk box in hull
7. install two half forward bulkhead
8. tape bottom and sides with FG tape and putty fillet
9. from outside, round edges of slot and coat with epoxy.



### **Daggerboard case assembly**

## Stitch and Glue procedure.



### Lamination schedule:

Chine, bow, transom inside:  
biaxial 1708, 6" wide, one layer  
Keel, in and outside:  
Biaxial 1708, 6" wide, one layer  
Outside all, seats and frames:  
9 oz. tape, 6" wide

For more info about our boat plans, see our forum or contact:

Mertens-Goossens N.A.  
Email: [jmertens@e-boat.net](mailto:jmertens@e-boat.net)  
or  
Phone/Fax: (772) 770-1225